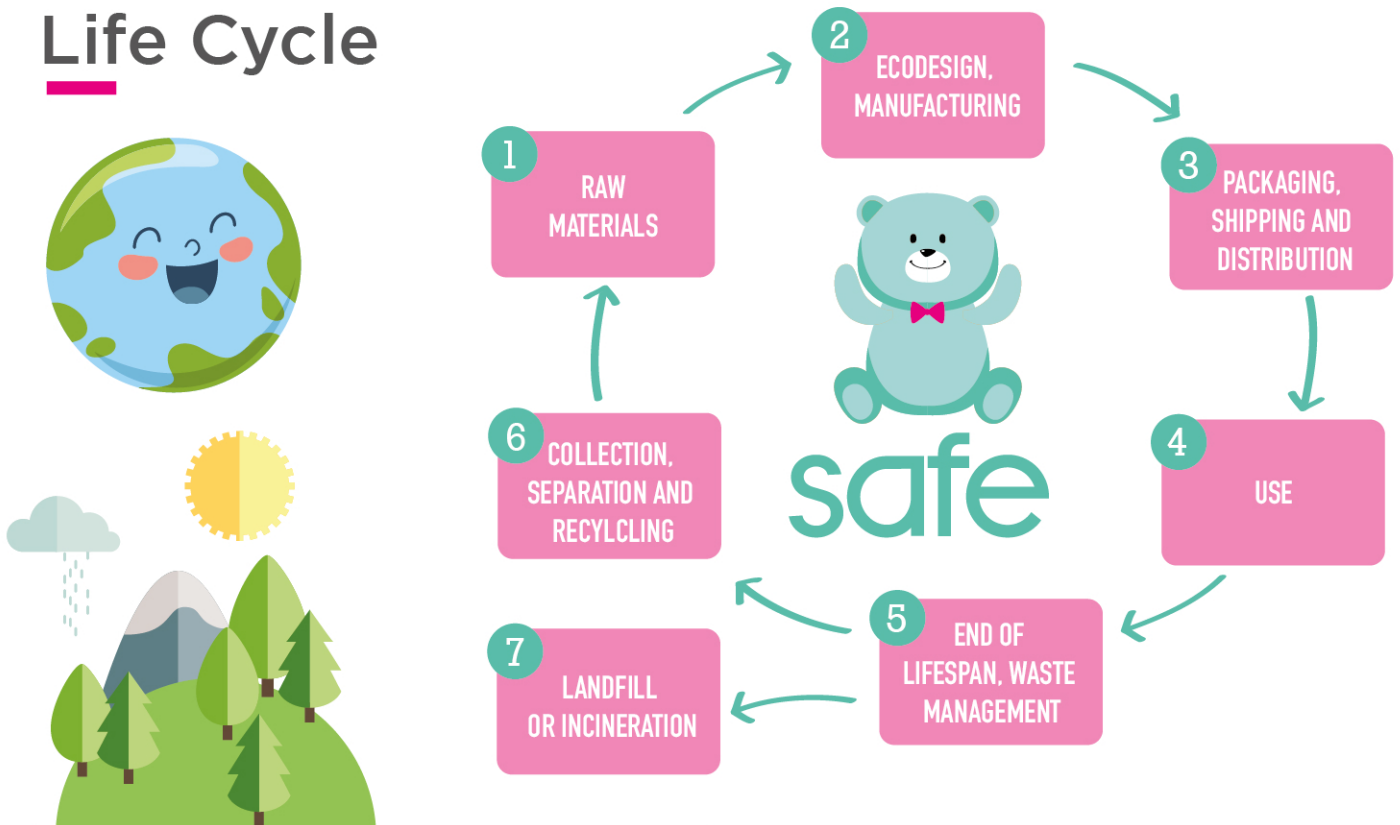


▶ When choosing a toy, we must consider the **environmental liability** of the product and the company that manufactures it.

## Life Cycle



### Backpack

Made with recycled polyester from recycled bottles

Made with recycled advertising banners

Made with tyres



### Doll

Made with dresses of recycled fabric

Made with biodegradable materials

Made with ecological dyes

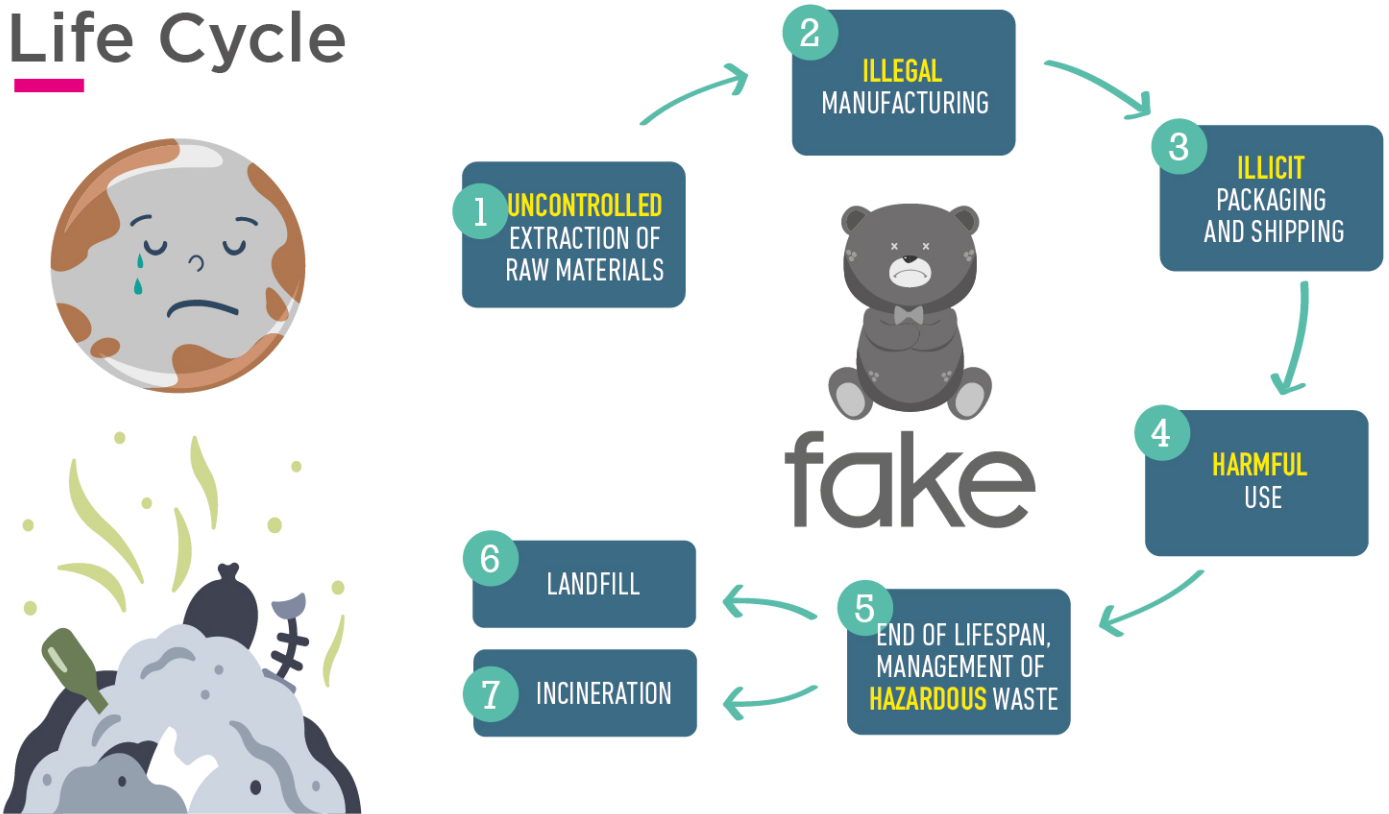


▶ The environmental impacts associated with the lifespan of a product have an influence on climate change, the air pollution index, the depletion of resources and other effects on environmental health.



▶ Let's see how the **manufacturing of a counterfeit toy** can affect the environment. To do this, we will make what is known as an analysis of the life cycle of a toy, assessing everything from the materials used to manufacture the toy up to the point when it is not used anymore and is thrown away.

## Life Cycle



### What can you do as a consumer?

As a consumer, you and your purchase decisions play a very important role. When you **choose toys that are original, safe and more respectful towards the environment**, you are helping to take care of our surroundings and our health.



Supported by:

